

# 1. WIRING A SINGLE TURNOUT

Track power wiring standards apply to all track segments equally without regard to mainline, secondary, or any other railroad definitions. A rail joiner is not to be considered as an adequate power supply connector unless the joiner connection is soldered and tested. Joiners are not soldered at turnouts or crossings. Additional power drops must be made to ensure reliable electrical connectivity for turnouts.

This discussion specifically covers a single turnout at the end of a conventional segment of EASTBOUND – WESTBOUND mainline or secondary track. For this discussion the frog ends of the turnout are assumed to connect to ordinary flex track. However, the facts discussed here are the same if the turnout under consideration is one half of a crossover pair.

This discussion further assumes that the Tortoise switch machine is mounted directly below the throw rod of the turnout in either of the two possible **conventional installation orientations**.

Deleted: installations

Other instruction sets cover the more complicated situations and ad hoc mounting methods of a Tortoise.

One ramification of direction of trains convention is that for any conventional portion of track, there is a NORTH rail and a SOUTH rail.

The NORTH rail is ALWAYS connected to the BLUE wire, and the SOUTH rail is ALWAYS connected to the GRAY wire. All frogs should have been connected to green wires (because frogs are usually green), but in our case we have been invaded with a peculiar species of YELLOW frogs that have BROWN STRIPES.

For the sake of simplicity, all of the diagrams shown in this discussion are built with the assumption that the far rail is the NORTH rail and that the eastbound trains move to the observer's right.

Each track segment has a unique identification code that allows the wiring and maintenance crews to easily recognize it from above and below the benchwork. Track segments are labeled by numbers from 1 through 64 inclusive.

A typical example of an identification for a conventional track segment might look like:

DCC 12

to indicate that this segment is connected to terminal block 12 in the power distribution circuit box.

Blue-Gray twisted pair power wires should have both ends wrapped with either a single strip of electrical marking tape similar to:



A short segment of the same type of tape is also applied to the Tortoise wiring harness to remind the maintenance workers what power division the turnout rails are.

Deleted: is

connected to. Note that a Tortoise may be replaced rather than repaired on the spot, so the identification applies to the harness, rather than to the switch machine.

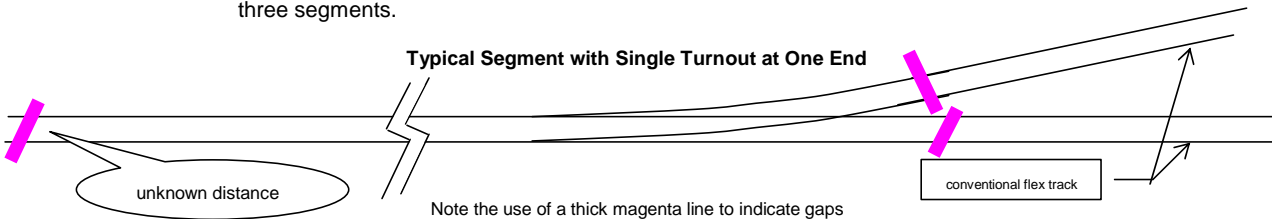
With rare exception, the rail joiners at the ends of a turnout are not soldered for maintenance reasons. A three wire drop is provided for each turnout with one for each of the outer or NORTH and SOUTH rails and the additional drop for the center frog and connected rail.

At the top of the roadbed, the drop is soldered to the outside or bottom of the rail. Keep the visible solder and wire to the minimum required to make a good mechanical and electrical connection at the rail. If there are options, such as in the case of a frog, use far side of the nearer rail. A soldered connection to a rail must NEVER be the suspected cause of a derailment!

Drops are always kept short. Many of the drops are fine uninsulated wires and must be kept physically isolated from each other even if accidentally tugged. For safety and for electrical reasons, the bare wires are best connected to the color coded 22 gauge or heavier wire within a half inch or so of the hole in the roadbed and below the turnout. Firmly affix the heavier wire to the bottom of the roadbed so that the fine wire will not receive any stress from an accidental tug.

A segment boundary is forced at the occurrence of a pair of electrical gaps on BOTH the rails of a track. The use of plastic rail joiners for all four rails at the frog end of a turnout is allowed when mechanical integrity of the track is maintained. Otherwise, when cuts are required, the rail gaps should be staggered by at least two ties along the track. Gaps should be on straight track, or else extra mechanical reinforcement must be provided to protect the track alignment.

The turnout rails are always powered by the segment adjacent to the point end of that turnout. If there are multiple turnouts as in a ladder or an interchange, see the separate discussion of that wiring situation. A single turnout always forces the boundary between three segments.



Note the use of a thick magenta line to indicate gaps  
 BOTH rails are gapped on both tracks  
 Gaps may be provided with insulating joiners or by making cuts in the rail  
 Gaps requiring cuts in the rail should be staggered by at least one or two ties  
 Gaps should be on straight track, or else extra mechanical reinforcement must be provided to protect alignment  
 Gaps internal to the turnout for a hot frog are not shown here

Deleted: s

Two turnouts positioned with the frog end of one turnout to the frog end of the other turnout, as for example, in a crossover, are automatically in two different track segments.

All mainline turnouts and many secondary track turnouts have an identification code that allows the wiring and maintenance crews to easily recognize it from above and below the benchwork. That identification code consists of a three or four digit number and is also the number assigned to the stationary decoder for the DCC control of that turnout. A separate discussion note explains how those code numbers are assigned.

Deleted: Each

Deleted: unique

NOTE: a temporary label for each turnout of a one or two digit number is for the Tortoise installation crew's identification purposes only.

All of the switch machines owned by the NCMRS are Tortoise machines with printed circuit board male edge connector. Club made wiring harnesses with female edge connectors are fitted onto the male edge connector portion of the Tortoise. Color standards for the female edge connector harness wires are described elsewhere.

The following description takes into account the fact that the Tortoise may normally be mounted in one of two possible positions under the roadbed. Since those two positions are 180 degrees in opposition, some care is required to consistently provide a working and maintainable installation. Other ad hoc mountings are not described here.

The harness must ALWAYS be installed so that the red wire end of the female connector is pointing towards the diverging route of the turnout and the gray wire end of the female connector is pointing towards the normal route. The harness must be provided with a mechanical wire wrap support tied to the bottom of the roadbed so that the harness female edge connector cannot slip off of the Tortoise male edge connector. The red and gray pair should be twisted and left long enough for future connection to the controlling power. All other connections should be kept reasonably short but not tight and be snugly affixed to the benchwork or to the bottom of the roadbed.

The yellow wire of the harness is always connected to the hot frog wire (GREEN or YELLOW/BROWN) from the turnout.

The orange and blue wires from the harness are then connected to the blue and gray drop wires from the turnout and the blue and gray wires from the power distribution, but the *harness color match is not predictable*. Each turnout must be verified in both its normal and diverging positions due to the 50/50 chance of the track power color selection. **Verification requires DCC power to the track, application of a test indication for track power, and moving the points of the switch manually via the position of the moving portion of the Tortoise to test the presence of track power on the other route.**

The Green, Purple, and Black harness wires are for future signaling purposes and should be rolled and tied and snugly affixed to the benchwork for later access.

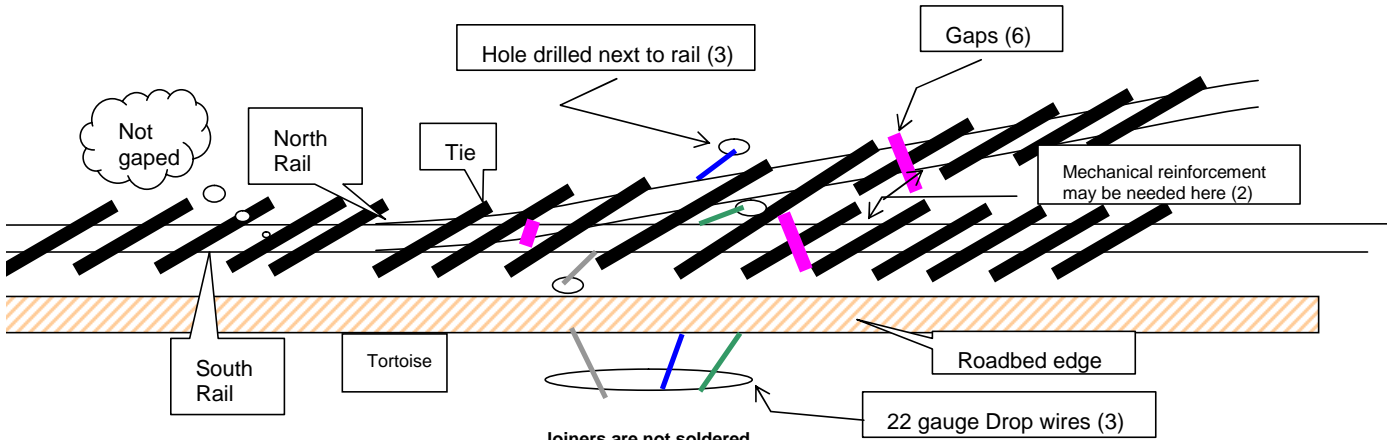
Finally, the red and gray wires from the harness are connected to the stationary decoder or other controlling electrical device dedicated to the switch machine.

If the power supply and control for the switch machine is an CVP AD4 stationary decoder, the red wire from the harness will be connected to one of the positions labeled with an odd number 1, 3, 5, or 7 and the gray wire will be connected to the adjacent position with the next larger even number, 2, 4, 6, or 8. If another form of power is supplied, when the red wire is held 9 to 12 volts positive with respect to the gray wire, the switch will be stable in the normal position.

Deleted:

The red wire end of the harness pointing towards the diverging route convention when applied to crossover turnouts yields the two red harness wires connected together and the two gray harness wires connected together and both Tortoises controlled by the same decoder address.

**Generic Single Turnout**



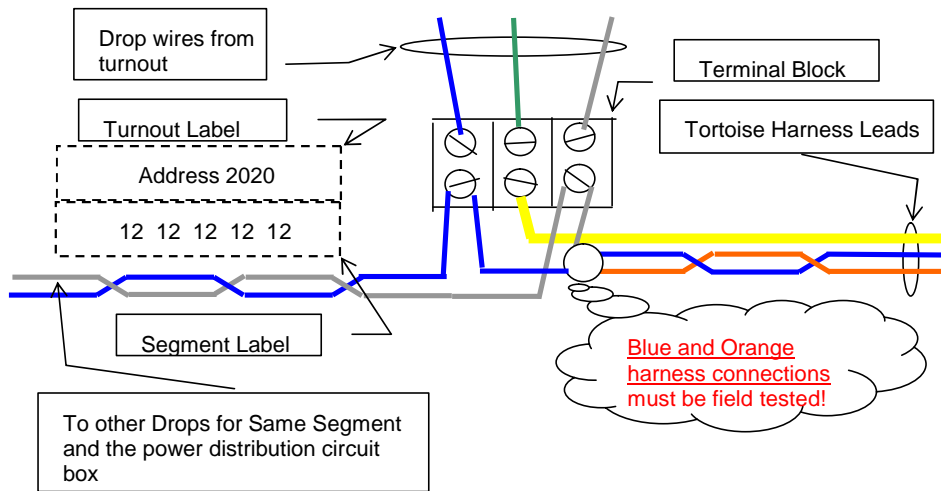
Joiners are not soldered

Gaps in point rails may be a feature of the turnout or added during installation  
 Gaps at frog end may be implemented as plastic joiners if mechanical integrity is supplied  
 Mechanical reinforcement of the rail may be provided by the use of a short section of snap track that is soldered to the flex track.

Three drops should be near the frog end of the turnout  
 Drops should be soldered to the outside or bottom of their respective rail near the frog area of the turnout  
 Holes in roadbed for drop leads should be close to outside of rails and easily covered with ballast later

### Generic Turnout Connections

Shown with provision for Hot Frog Turnout



Actual terminal blocks may bear only slightly similar appearance or even be wire nuts  
Wires terminating at screw head connectors must have crimped spade lugs attached first.  
Each connection to the Tortoise MUST be verified to match the polarity of the Frog with the position of the Turnout  
Normal versus Diverging routes and the actual mounting position of the Tortoise MUST be dealt with and verified in each case.